

Table 1. Origin-destination table for California economic-areas

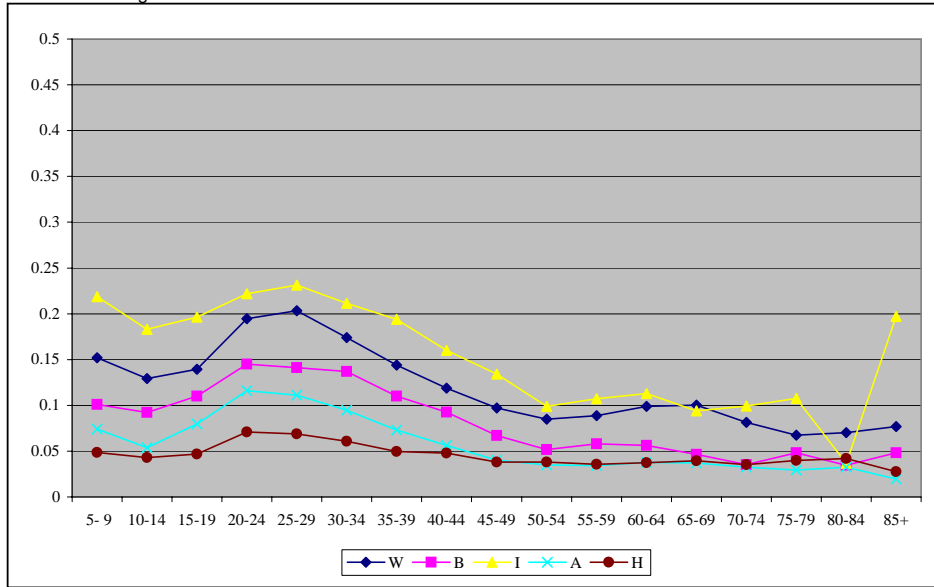
		151	160	161	162	163	164	165	166	666
White	151	43,159	3,543	513	592	2,487	3,066	1,153	114	6,538
	160	4,975	6,509,742	101,193	28,786	119,019	54,001	9,497	1,352	667,469
	161	601	71,365	1,120,990	3,313	23,792	8,029	1,454	168	189,437
	162	360	19,383	3,103	482,385	17,667	6,331	740	47	28,738
	163	4,314	100,548	28,442	21,363	3,992,199	111,725	13,784	1,594	362,500
	164	2,580	25,568	7,048	4,330	54,014	1,044,937	6,864	587	85,113
	165	1,068	4,297	795	711	6,659	8,050	159,002	213	13,272
	166	73	346	41	135	946	240	232	11,208	1,817
	666	5,229	652,750	245,627	33,186	404,707	110,628	15,098	1,799	157,301,736
	999	341	153,775	26,042	4,146	75,101	14,724	553	57	1,277,130
Black	151	546	17	7	38	233	20	0	0	98
	160	572	990,793	6,853	4,178	13,525	4,856	99	209	80,244
	161	61	5,871	89,700	199	2,344	278	27	60	20,328
	162	51	1,338	283	31,403	1,159	524	13	0	2,098
	163	314	10,071	2,401	2,566	462,743	9,623	287	232	38,975
	164	111	2,466	310	383	3,545	68,246	90	89	5,917
	165	6	86	0	0	130	76	1,258	36	101
	166	0	0	0	0	0	0	7	170	8
	666	136	82,546	32,054	2,461	43,200	9,596	128	30	24,182,209
	999	7	12,835	3,334	443	9,011	1,767	24	0	361,323
Amer. Ind.	151	2,717	92	7	33	66	103	24	10	252
	160	53	60,423	914	547	1,260	684	146	79	9,280
	161	35	773	11,578	86	236	60	23	0	2,425
	162	53	269	38	8,918	301	104	63	0	632
	163	102	1,053	249	413	46,576	1,531	414	49	4,778
	164	137	310	53	138	833	17,148	280	9	1,390
	165	25	38	25	0	222	228	4,675	14	374
	166	0	22	0	18	61	22	16	1,026	49
	666	225	6,513	2,812	559	4,082	1,704	460	92	1,475,463
	999	8	704	208	35	524	73	2	0	10,593
Asian	151	295	36	0	0	32	31	4	0	109
	160	51	916,459	7,543	2,823	16,058	2,512	145	31	39,264
	161	0	6,758	117,270	925	2,932	611	14	0	8,825
	162	0	1,677	392	39,341	2,240	1,085	107	19	1,930
	163	89	16,983	3,112	2,049	714,107	12,113	299	43	26,533
	164	57	2,326	404	358	4,840	75,209	99	28	3,505
	165	0	79	10	94	110	153	1,199	6	187
	166	0	0	0	0	46	0	0	41	12
	666	123	75,383	16,195	4,793	50,631	7,641	781	56	3,073,573
	999	61	218,171	28,839	12,440	147,599	17,294	453	54	759,854
Other	151	11	7	0	0	0	0	0	0	3
	160	9	22,737	243	124	329	103	29	0	1,149
	161	0	135	2,257	0	21	0	0	0	244
	162	0	54	21	1,731	8	23	0	0	2
	163	2	205	59	72	8,625	105	6	0	606
	164	0	15	19	8	57	1,325	0	0	114
	165	0	0	0	0	0	11	80	0	2
	166	0	0	0	0	0	0	0	0	0
	666	18	1,150	355	129	540	173	22	0	137,625
	999	0	2,075	173	144	1,184	143	0	0	11,866
Hispanic	151	3,009	315	42	179	373	233	83	0	346
	160	760	3,776,304	29,624	15,604	31,161	8,561	712	251	121,747
	161	113	18,427	324,129	865	4,352	1,026	16	87	19,706
	162	240	12,259	1,498	304,459	7,974	1,651	84	125	8,630
	163	566	27,416	6,158	8,534	1,002,619	14,829	931	279	39,763
	164	267	5,728	956	1,013	6,996	142,940	338	129	5,999
	165	101	329	50	82	524	840	8,309	103	641
	166	0	55	0	14	116	46	12	916	97
	666	276	95,994	26,936	7,950	39,079	8,515	699	104	11,749,593
	999	676	544,393	53,743	25,787	110,969	11,597	580	187	920,018

Table 2. Origin-destination table for California economic-areas

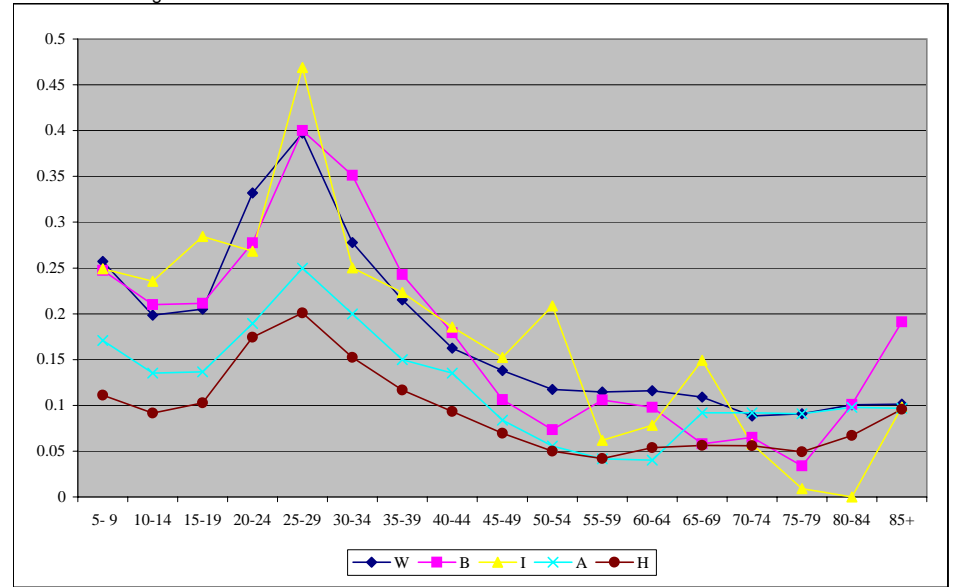
		151	160	161	162	163	164	165	166	666
White	151	0.706	0.058	0.008	0.010	0.041	0.050	0.019	0.002	0.107
	160	-	0.868	0.013	0.004	0.016	0.007	0.001	-	0.089
	161	-	0.050	0.790	0.002	0.017	0.006	0.001	-	0.133
	162	-	0.035	0.006	0.863	0.032	0.011	0.001	-	0.051
	163	-	0.022	0.006	0.005	0.861	0.024	0.003	-	0.078
	164	0.002	0.021	0.006	0.004	0.044	0.849	0.006	-	0.069
	165	0.006	0.022	0.004	0.004	0.034	0.041	0.819	0.001	0.068
	166	0.005	0.023	0.003	0.009	0.063	0.016	0.015	0.745	0.121
	666	-	0.004	0.002	-	0.003	-	-	-	0.991
	999	-	0.099	0.017	0.003	0.048	0.009	-	-	0.823
Black	151	0.569	0.018	0.007	0.040	0.243	0.021	-	-	0.102
	160	-	0.900	0.006	0.004	0.012	0.004	-	-	0.073
	161	-	0.049	0.755	0.002	0.020	0.002	-	-	0.171
	162	0.001	0.036	0.008	0.852	0.031	0.014	-	-	0.057
	163	-	0.019	0.005	0.005	0.878	0.018	-	-	0.074
	164	0.001	0.030	0.004	0.005	0.044	0.841	0.001	0.001	0.073
	165	0.004	0.051	-	-	0.077	0.045	0.743	0.021	0.060
	166	-	-	-	-	-	-	0.038	0.919	0.043
	666	-	0.003	0.001	-	0.002	-	-	-	0.993
	999	-	0.033	0.009	0.001	0.023	0.005	-	-	0.929
Amer. Ind.	151	0.822	0.028	0.002	0.010	0.020	0.031	0.007	0.003	0.076
	160	-	0.823	0.012	0.007	0.017	0.009	0.002	0.001	0.126
	161	0.002	0.051	0.761	0.006	0.016	0.004	0.002	-	0.159
	162	0.005	0.026	0.004	0.859	0.029	0.010	0.006	-	0.061
	163	0.002	0.019	0.005	0.007	0.844	0.028	0.008	-	0.087
	164	0.007	0.015	0.003	0.007	0.041	0.845	0.014	-	0.068
	165	0.004	0.007	0.004	-	0.040	0.041	0.835	0.002	0.067
	166	-	0.018	-	0.015	0.050	0.018	0.013	0.845	0.040
	666	-	0.004	0.002	-	0.003	0.001	-	-	0.989
	999	-	0.058	0.017	0.003	0.043	0.006	-	-	0.872
Asian	151	0.582	0.071	-	-	0.063	0.061	0.008	-	0.215
	160	-	0.931	0.008	0.003	0.016	0.003	-	-	0.040
	161	-	0.049	0.854	0.007	0.021	0.004	-	-	0.064
	162	-	0.036	0.008	0.841	0.048	0.023	0.002	-	0.041
	163	-	0.022	0.004	0.003	0.921	0.016	-	-	0.034
	164	-	0.027	0.005	0.004	0.056	0.866	0.001	-	0.040
	165	-	0.043	0.005	0.051	0.060	0.083	0.652	0.003	0.102
	166	-	-	-	-	0.465	-	-	0.414	0.121
	666	-	0.023	0.005	0.001	0.016	0.002	-	-	0.952
	999	-	0.184	0.024	0.010	0.125	0.015	-	-	0.641
Other	151	0.524	0.333	-	-	-	-	-	-	0.143
	160	-	0.920	0.010	0.005	0.013	0.004	0.001	-	0.046
	161	-	0.051	0.849	-	0.008	-	-	-	0.092
	162	-	0.029	0.011	0.941	0.004	0.013	-	-	0.001
	163	-	0.021	0.006	0.007	0.891	0.011	-	-	0.063
	164	-	0.010	0.012	0.005	0.037	0.862	-	-	0.074
	165	-	-	-	-	-	0.118	0.860	-	0.022
	166	-	-	-	-	-	-	-	-	-
	666	-	0.008	0.003	-	0.004	0.001	-	-	0.983
	999	-	0.133	0.011	0.009	0.076	0.009	-	-	0.761
Hispanic	151	0.657	0.069	0.009	0.039	0.081	0.051	0.018	-	0.076
	160	-	0.948	0.007	0.004	0.008	0.002	-	-	0.031
	161	-	0.050	0.879	0.002	0.012	0.003	-	-	0.053
	162	-	0.036	0.004	0.904	0.024	0.005	-	-	0.026
	163	-	0.025	0.006	0.008	0.911	0.013	-	-	0.036
	164	0.002	0.035	0.006	0.006	0.043	0.870	0.002	-	0.036
	165	0.009	0.030	0.005	0.007	0.048	0.077	0.757	0.009	0.058
	166	-	0.044	-	0.011	0.092	0.037	0.010	0.729	0.077
	666	-	0.008	0.002	-	0.003	-	-	-	0.985
	999	-	0.326	0.032	0.015	0.067	0.007	-	-	0.552

Figure 1: Age-origin specific mover rates, 1985-1990

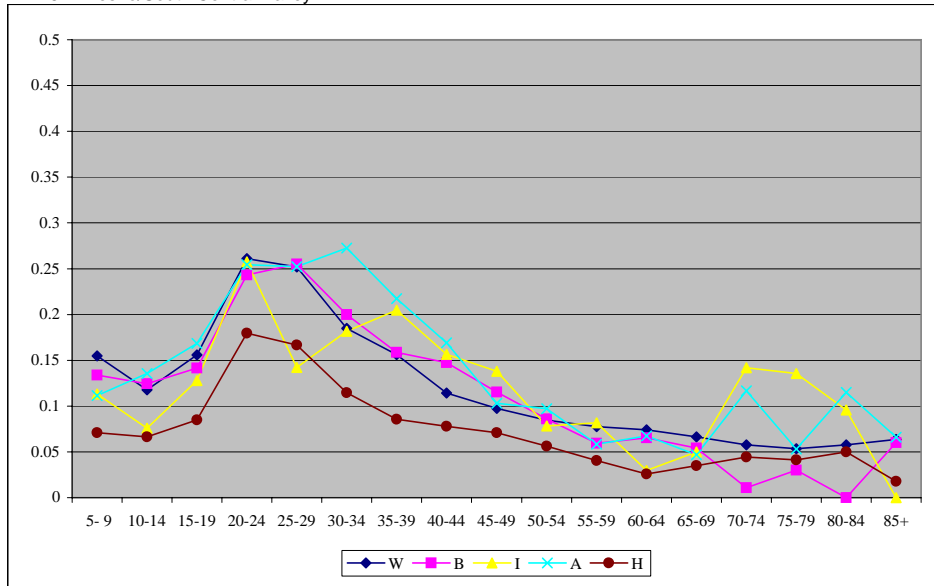
EA 160: Los Angeles



EA 161: San Diego



EA 162: Fresno/South Central Valley



EA 163: Bay Area and North Coast

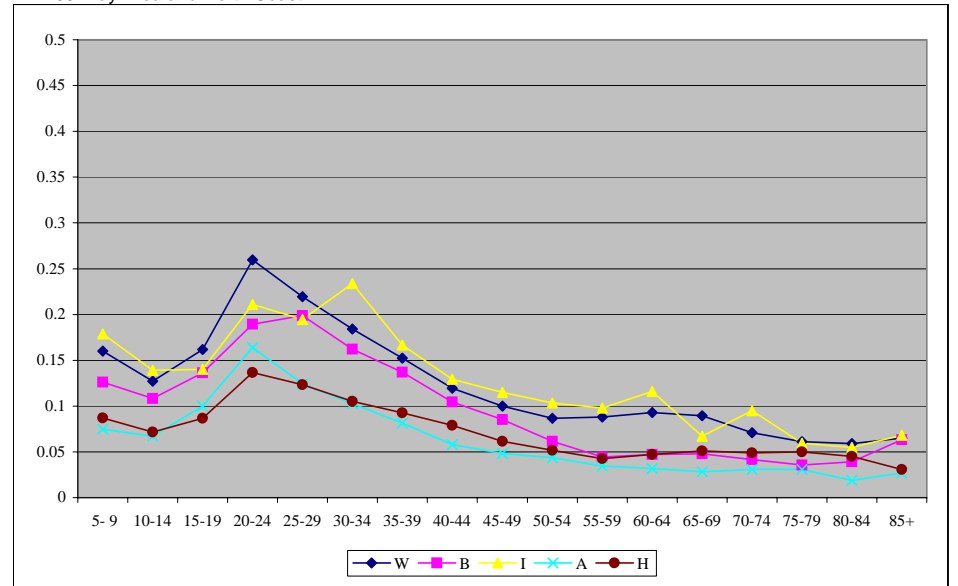
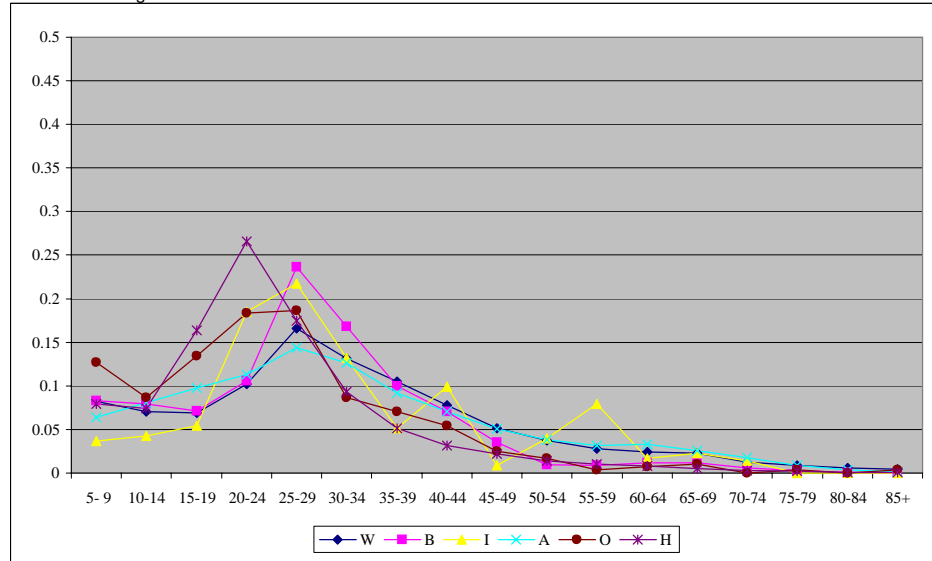
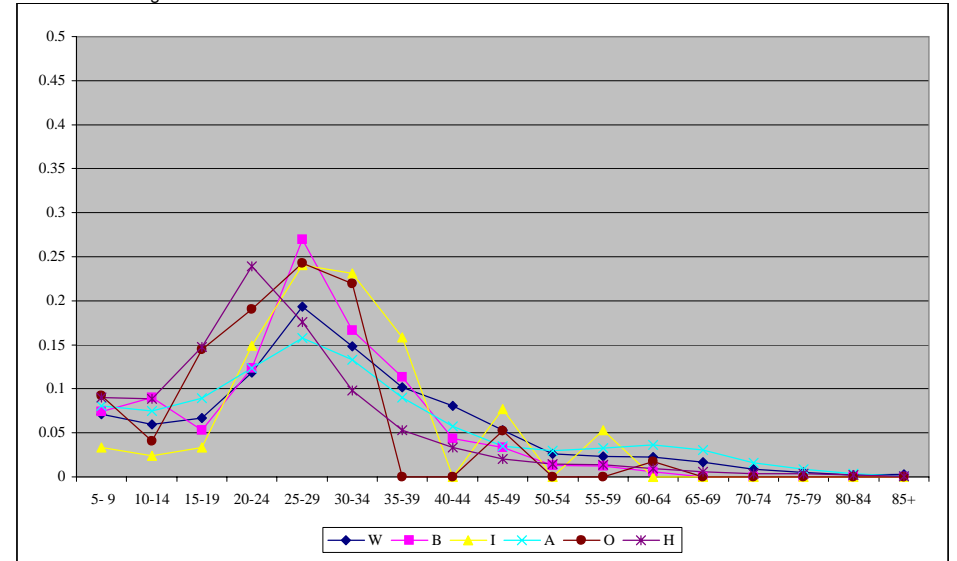


Figure 2: Age-destination specific immigration distribution, 1985-1990

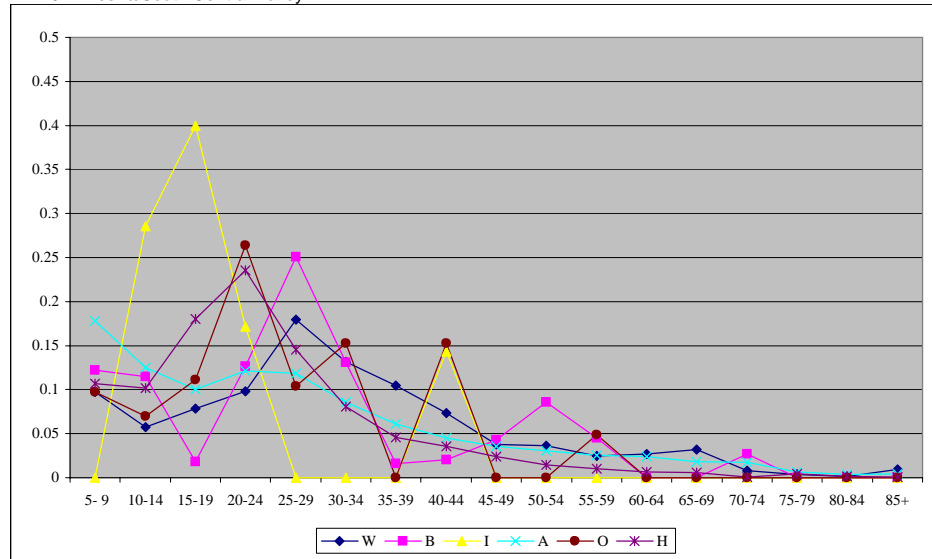
EA 160: Los Angeles



EA 161: San Diego



EA 162: Fresno/South Central Valley



EA 163: Bay Area and North Coast

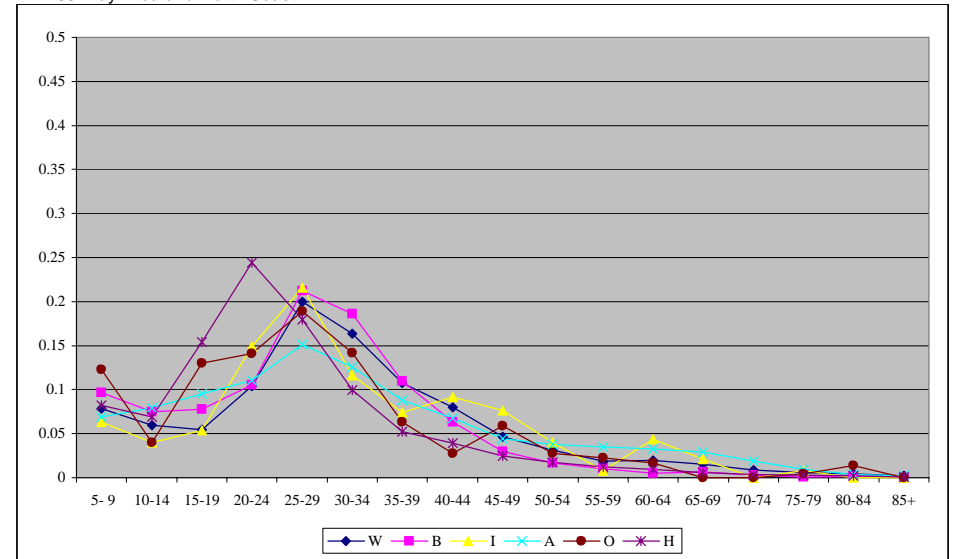
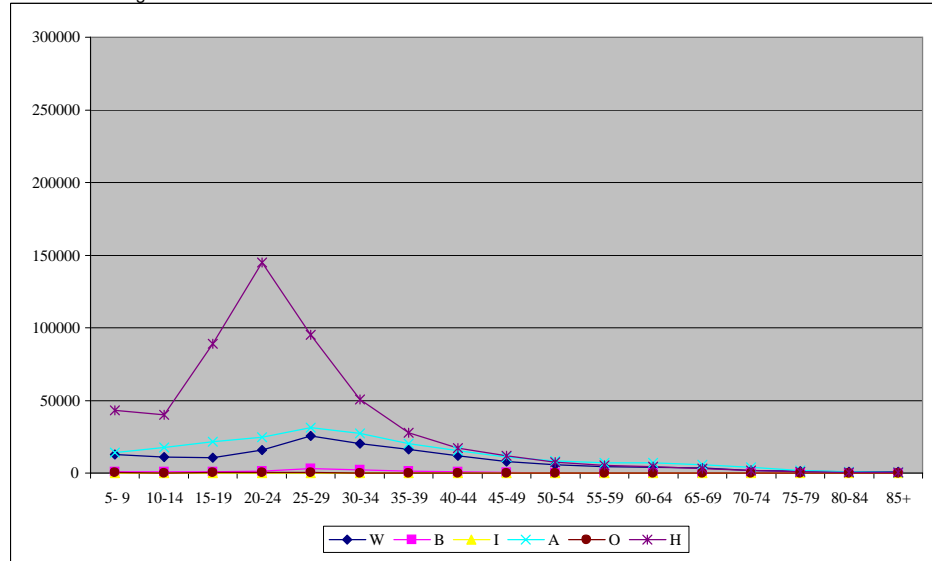
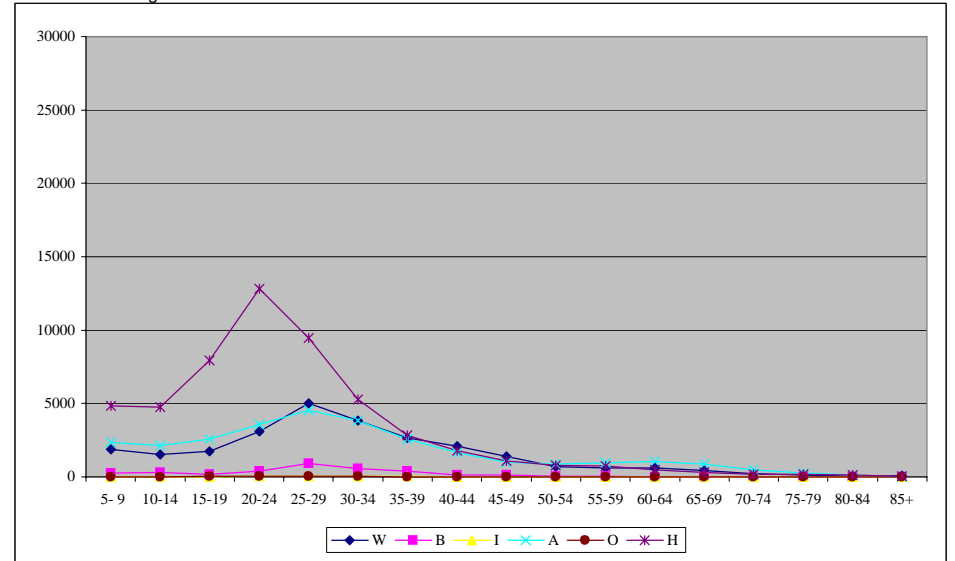


Figure 3: Age-destination specific immigration levels, 1985-1990

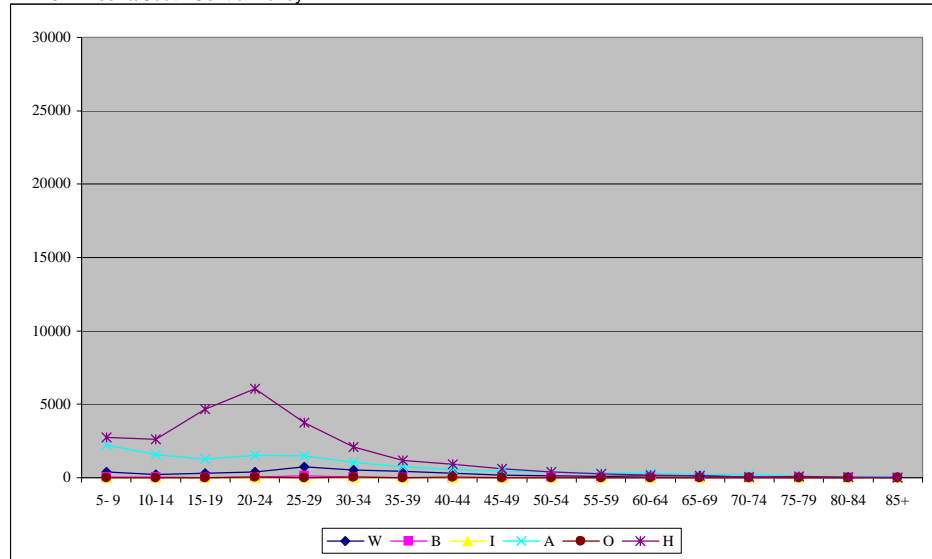
EA 160: Los Angeles



EA 161: San Diego



EA 162: Fresno/South Central Valley



EA 163: Bay Area and North Coast

