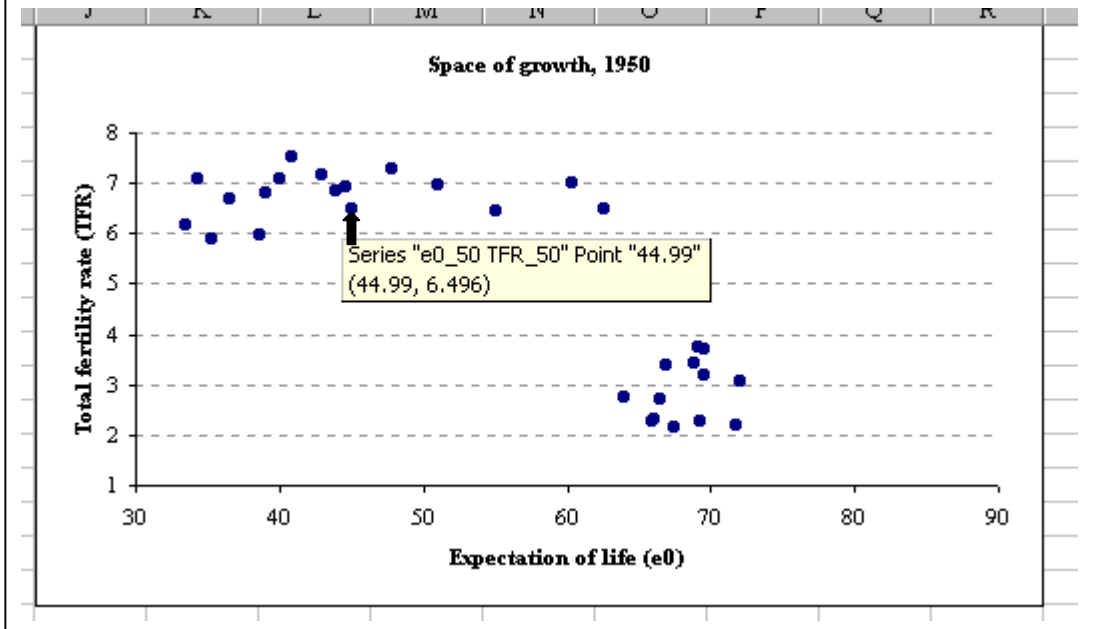


Supplemental notes

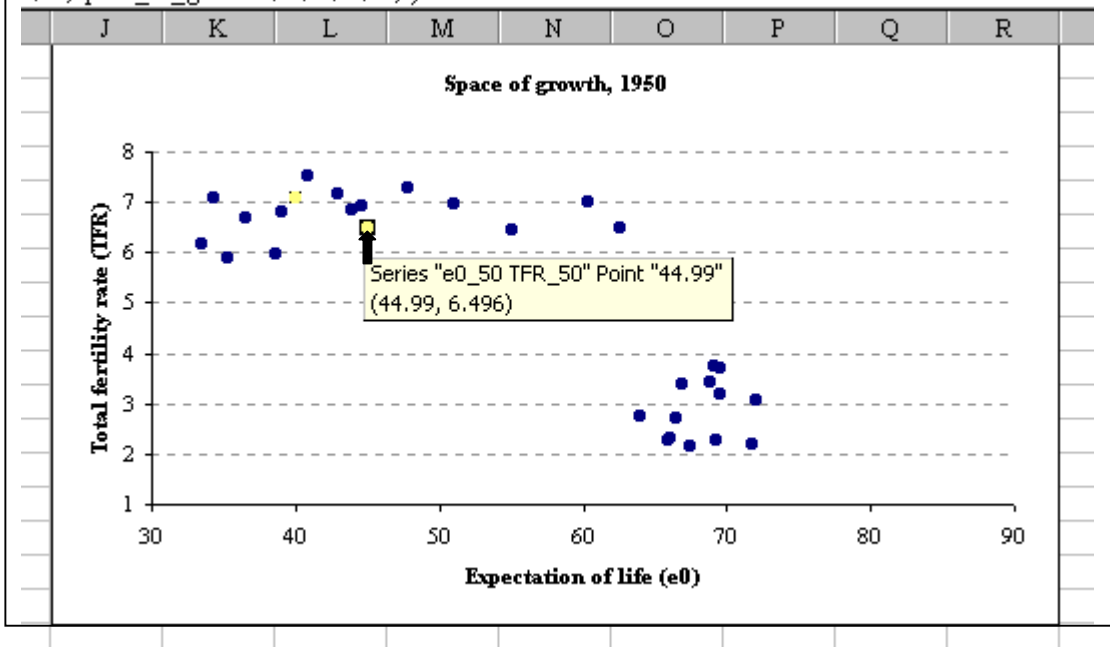
The following seven procedural steps will lead you through changing the shape, size, and color for an individual observation in your Excel graph.

Step 1: Left click on the observation for your country. Notice that all of the points become highlighted.



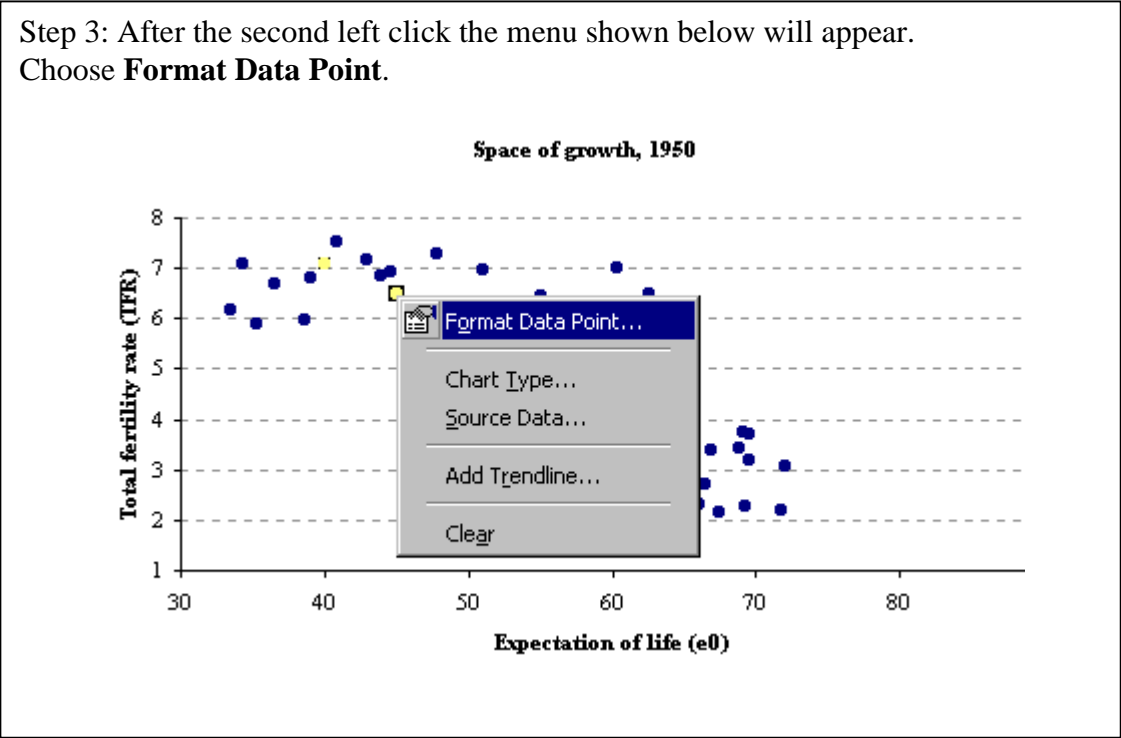
Step 2: Left click a second time on the same observation and it will be the only one highlighted as shown below.

=\$34:space_of_growth!\$D\$4:\$D\$34,1)

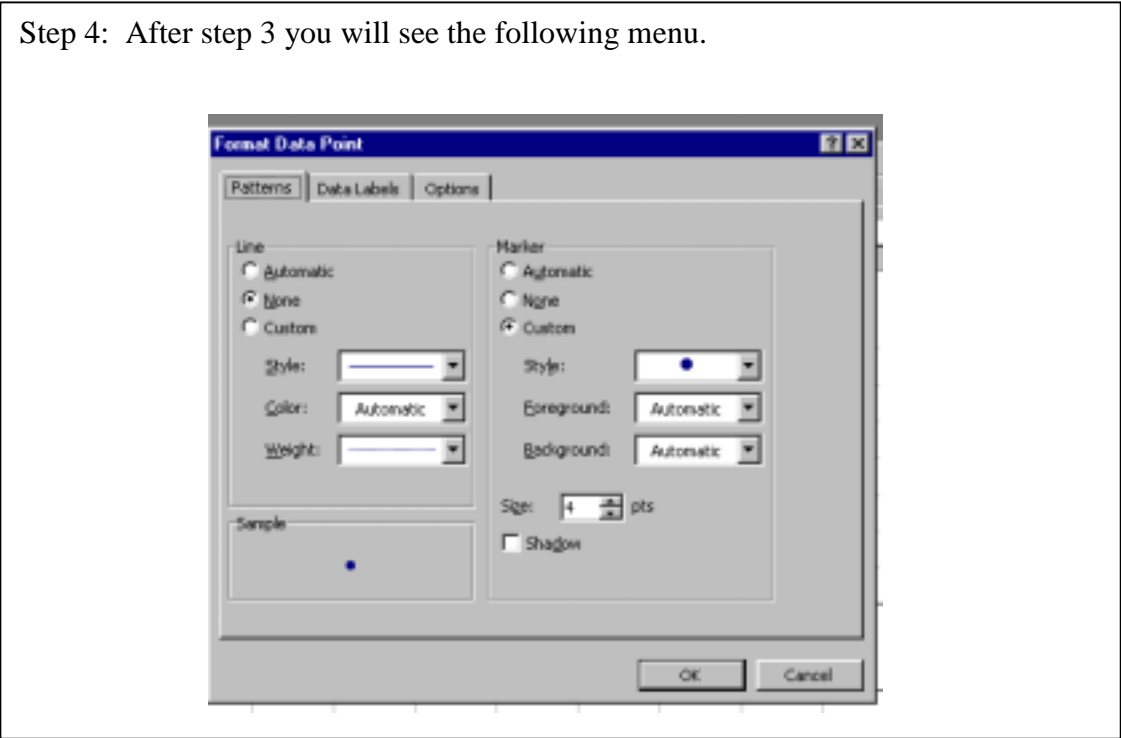


Supplemental notes (cont.)

Step 3: After the second left click the menu shown below will appear. Choose **Format Data Point**.

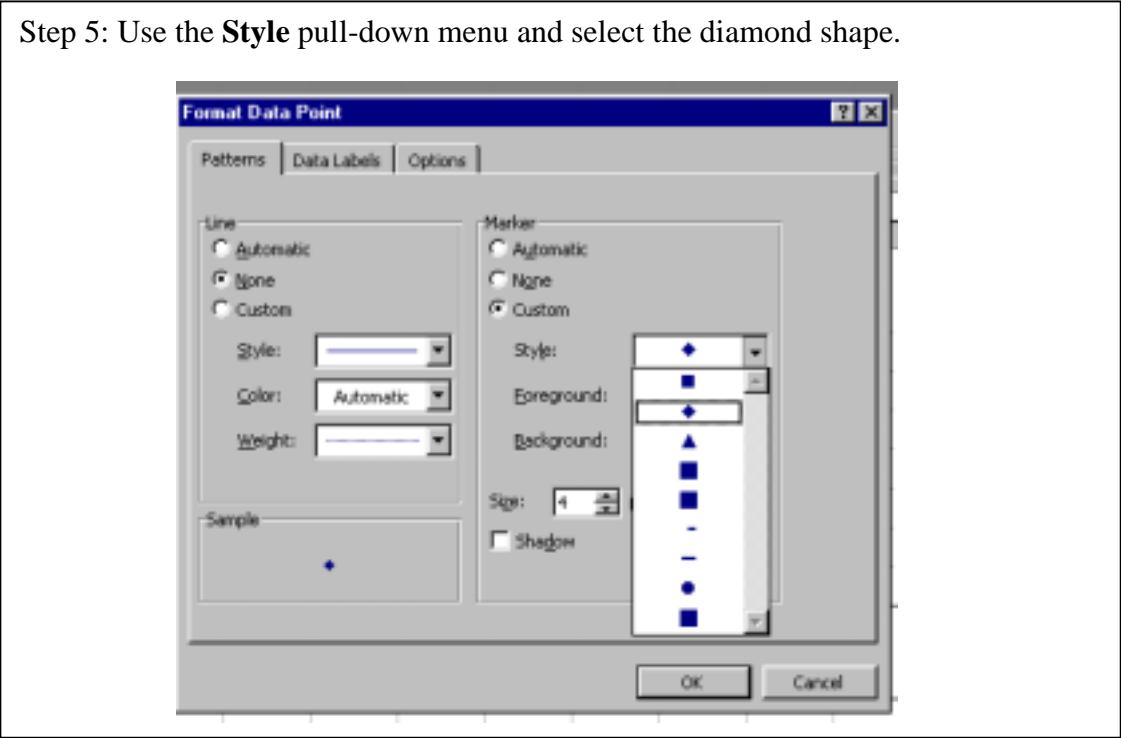


Step 4: After step 3 you will see the following menu.

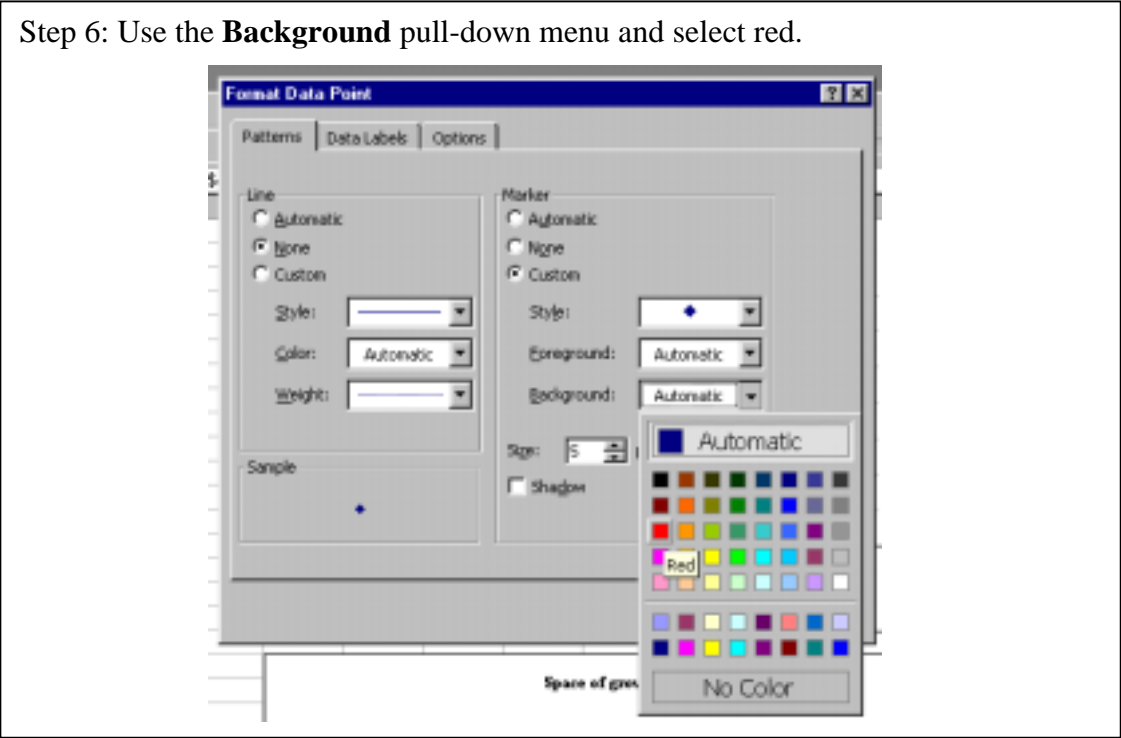


Supplemental notes (cont.)

Step 5: Use the **Style** pull-down menu and select the diamond shape.



Step 6: Use the **Background** pull-down menu and select red.



Supplemental notes (cont.)

Step 7: Click on the up arrow next to **Size** to increase the symbol size to 7.

